

NGONI



CARRSWOOD
YACHTS



NGONI

58 METRE / 190 FT SLOOP 'NGONI'
BUILT IN 2017 BY ROYAL HUISMAN SHIPYARD, NL
DESIGNED BY ED DUBOIS
PROJECT MANAGEMENT BY GODFREY CRAY

A truly remarkable design built by the world's finest superyacht shipyard. The 58 metre (190ft) sloop NGONI is now for sale. This final flourish from the late Ed Dubois was undoubtedly his most striking, innovative and demanding commission. Ngoni's experienced owner requested a cutting edge, minimalist and purposeful design. This was not to be a "Wolf in Sheep's clothing" but "edgy, innovative and fast!"



“BUILD ME A BEAST,”
DEMANDED THE
OWNER,

“DON’T BUILD ME A
WOLF IN SHEEP’S
CLOTHING. THIS
HAS TO BE AN EDGY
AND INNOVATIVE
WEAPON; FAST AND
FURIOUS.”





UNDER SAIL / PERFORMANCE

The exterior is minimalist and purposeful; seeking to maximise reliability & to enhance elegance and aerodynamic efficiency through clean, uncluttered lines. The yacht is primarily driven by a vast carbon sloop rig of 71m/233ft and the latest North Sails square-top mainsail. As an owner who likes to helm, he insisted on steering that was light, yet firm and responsive. The wheel had to give him the true feel of the boat under sail. Finally, the yacht, however edgy in presentation, should still offer luxurious amenity, optimising hull volume to accommodate owner, family and guests in style and comfort. Dubois drew the hull with a striking reverse sheer from the bow to the centre of the deckhouse. He balanced that with a gentle concave sheer going aft and reversing once more over the beach deck. He radiused the plumb bow, top and bottom and drafted a challenging, full-glass deckhouse incorporating extreme curves. He also designed an extended Rondal boom of some 24m /79ft. The transformation was complete. The owner had his 'sleek and edgy' weapon.





EXTERIOR / ONDECK

Disguised under Ngoni's flush deck and hull are numerous openings; a giant foredeck tender garage for the 5.6m jet tender, a dedicated launch crane, flush sail lockers, all carbon jacuzzi spa pool, cooled waste locker, a sea-level gym door, fold-out side boarding platform with beach and two submarine anchors under the waterline. Aft of the foredeck, the towering carbon mast is one of the world's three largest one-piece spars ever built by Rondal. Ngoni's full air-draft is 75m / 246ft. The Dubois office created by far the most extreme style-to-order boom yet seen. The almost 4m / 13ft aft extension of the boom, designed and crafted to follow the profile of the yacht's stern, created superb visual harmony. The beach deck aft completes the exterior picture in style: the grand, curving staircase descending elegantly to sea level and the sculpted teak horseshoe sun-lounging area – what better place to take in the day's activities with a favourite sundowner cocktail?







INTERIOR / MAIN DECK

A highly stable boarding platform at tender level is linked to the deck by boarding steps adjacent to the deckhouse, offering easy access to the deck amidships. Seamless sliding glass doors aft provide access to the sheltered guest cockpit beneath the deckhouse overhang. Electrically operated sliding glass wind breakers ensure a perfect, flexible outdoor environment whatever the conditions. The luxuriously appointed guest cockpit offers an intimate outdoor space for reading, relaxation, playing games or simply watching a movie on the outdoor retracting television screen.

The deck saloon is laid out to incorporate luxurious informal seating and pop-up television to port, formal dining to starboard and a seated bar- all affording superb visibility and comfort. Doors forward give access to the nav station and the crew area and machinery spaces below. The light and airy deck house interior incorporates fascinating artwork, bespoke furniture and exotic finishes.





OWNERS GYM



OWNERS OFFICE





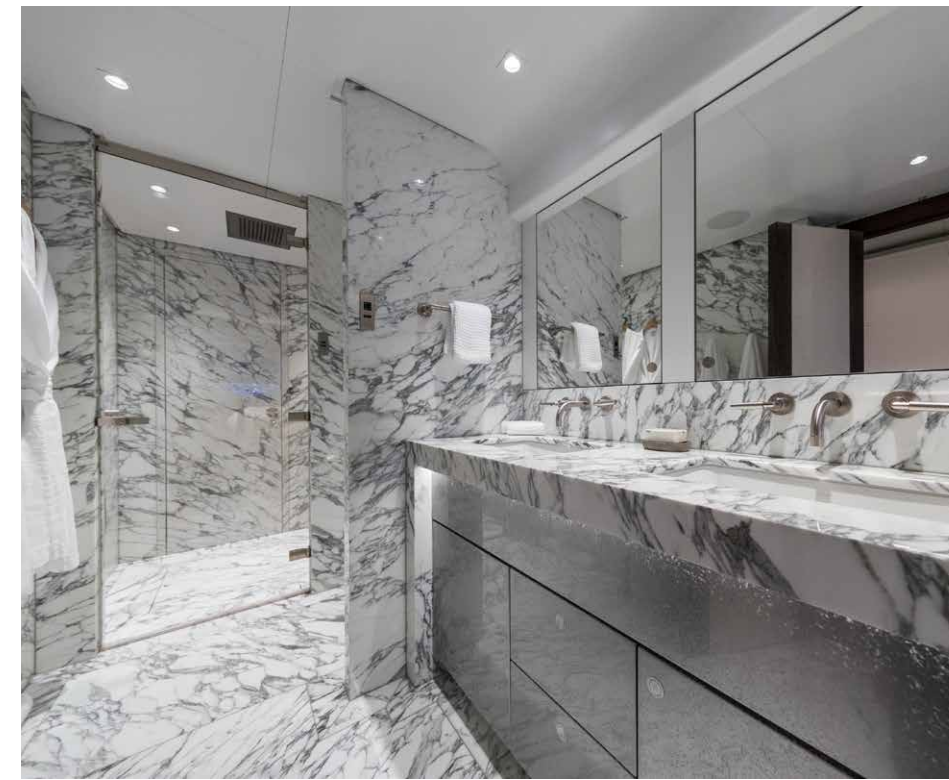
INTERIOR / ACCOMMODATION



MASTER SUITE

Interior designer Rick Baker recalls all too well the requests of the owner “Don’t design a traditional yacht interior.” The scheme should have flowing curves interspersed with organic detailing and unique materials. The interior was to have a contemporary feel, broken up with punches of vibrant colour. The use of vivid resins, combined with sculpted metal surfaces, was to give a fluid feel throughout, yet each area should have its own identity.” The owner settling on bespoke walnut veneers and distinctive Italian marble and onyx. The result is design originality that delights the eye yet still provides warm and inviting spaces for the owners and their guests.

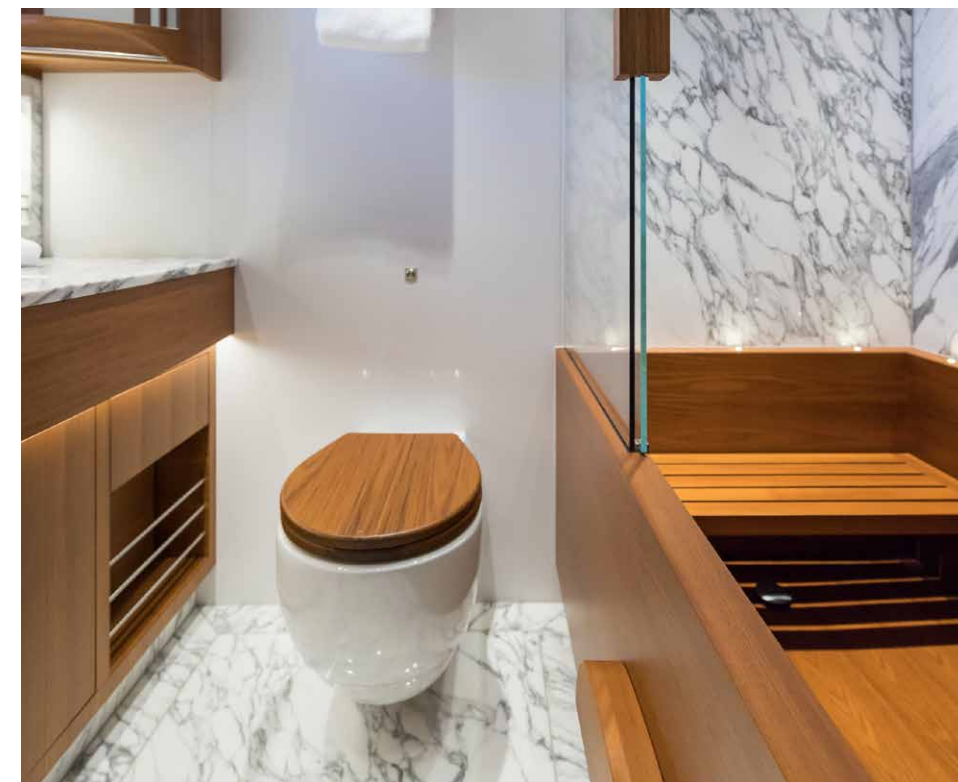
Owner’s and guest accommodation is accessed via a grand curving staircase from the deckhouse to the guest lobby. The owners’ suite, aft, comprises a full-beam stateroom with bespoke built-in furniture, an enormous bathroom with access from two sides, a spacious study with its own bathroom and a large gym with an opening hull portlight in the topsides for fresh air. The owner was very specific about the configuration of the sophisticated audio-visual system, asking iPad users to interface with the custom setup supplied by Tijssen Elektro based on Royal Huisman engineering. With 48 terabyte storage and a vault for 320 disks, there is access to a wealth of music and movies.







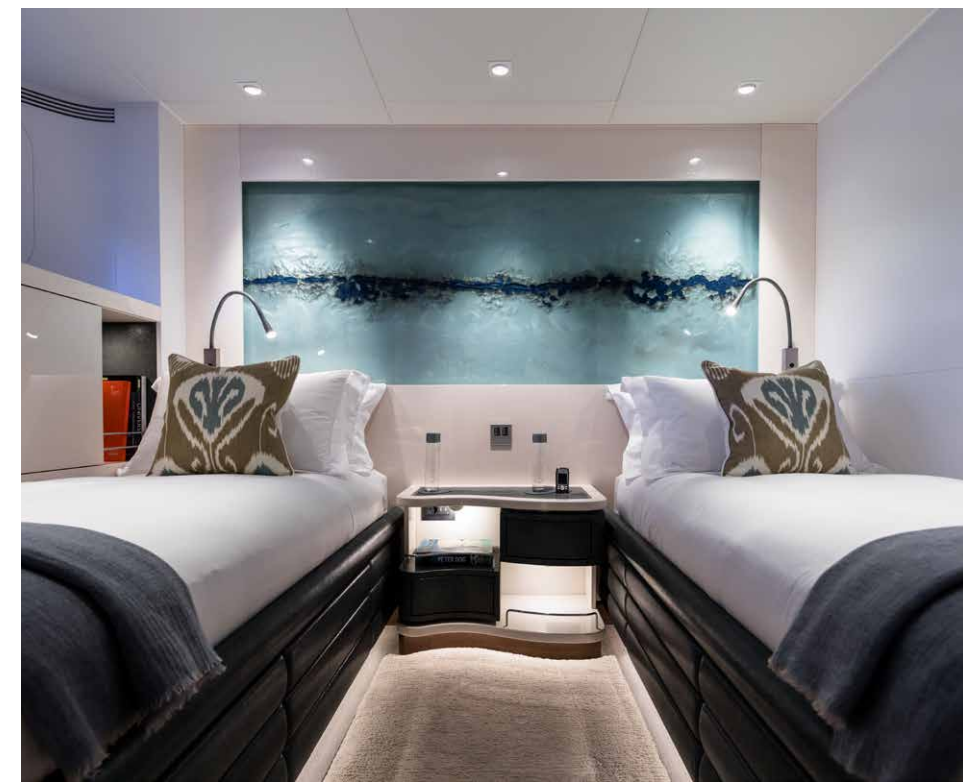
GUEST CABINS





GUEST CABINS

To port, there is a superbly appointed twin guest cabin with spacious bathroom and to starboard, a double guest cabin featuring a Japanese bath. Both feature exotic veneers, marbles and resin finishes by Rick Baker Ltd. Large, rectangular portlights offer superb natural lighting.



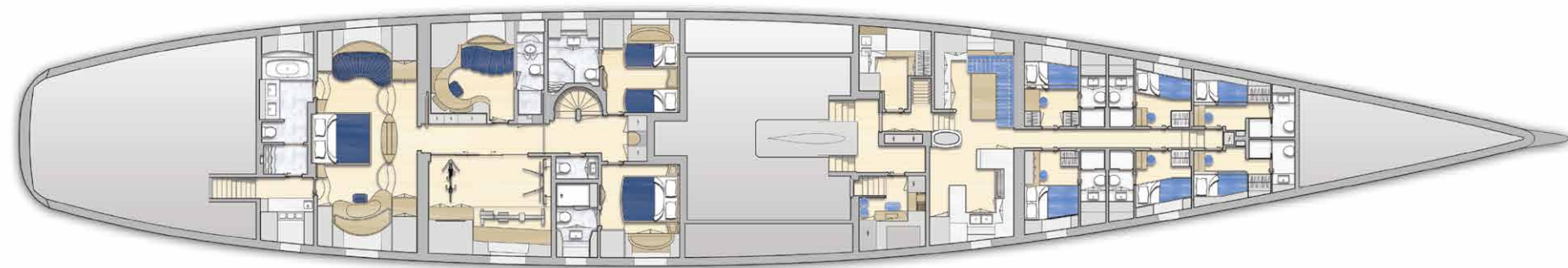
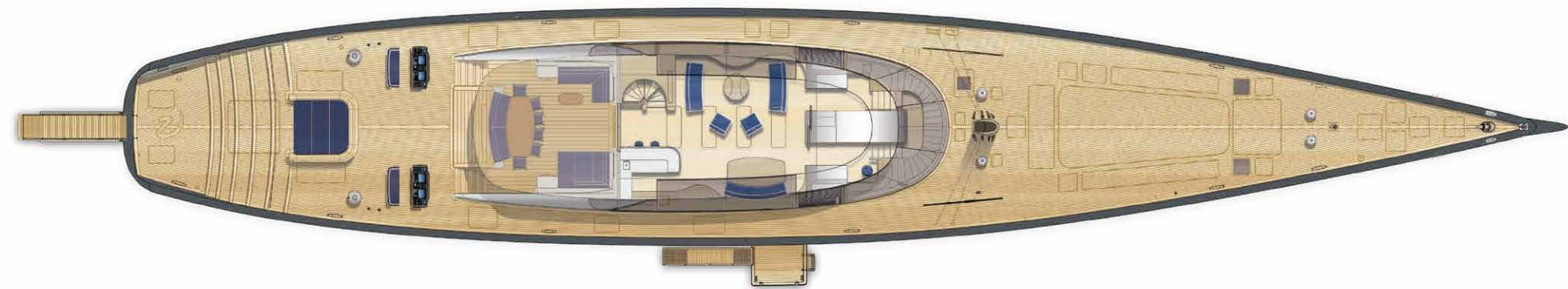


TECHNICAL & CREW AREAS

The crew benefit from high quality amenities on the forward cabin deck, in conformance with the Large Commercial Yacht Code (LY3). There is accommodation for up to nine crew in six crew cabins. All enjoy superb cabin fit-outs with ensuite bathroom and shower facilities. Aft of the crew accommodation, a bright, spacious and professionally equipped galley, to starboard, is open to the crew mess opposite. Further aft is a large laundry. From the crew accommodation the engineer has direct access to the engine control room and then state-of-the-art engine room. This is every yacht's beating heart – the very finest Dutch engineering and class leading German MTU 966hp main engine all sound insulated to exceptional Royal Huisman standards.



LAYOUT/GENERAL ARRANGEMENT



RIG DIMENSIONS

I:	66.00 m / 216.5 ft
P:	63.78 m / 209.3 ft
E:	20.30 m / 66.6 ft
J:	19.95 m / 65.5 ft
Full air-draft:	75 m / 246 ft

SAIL AREAS

Main:	853 m ² / 9,182 ft ²
Blade:	687 m ² / 7,395 ft ²
Solent:	305 m ² / 3,283 ft ²
Code:	1097 m ² / 11,808 ft ²
Gennaker:	2240 m ² / 24,111 ft ²
Total up wind:	1950 m ² / 20,989 ft ²
Total down wind:	3093 m ² / 33,293 ft ²



NGONI

SPECIFICATION

Type: 58m Sloop with lifting keel **Name:** NGONI **Naval architect:** Dubois Naval Architects

Exterior stylist: Dubois Naval Architects **Interior design:** Rick Baker Ltd.

Project mgt: Godfrey Cray Maritime Ltd. **Builder:** Royal Huisman, Netherlands

Year of delivery: 2017 **Registered:** British (Jersey) Registered **VAT:** Not paid

DIMENSIONS

Length	58.15 m / 190.3 ft
Length waterline	51.20 m / 167.9 ft
Beam max.	9.54 m / 31.3 ft
Draft keel up	5.30 m / 17.4 ft
Draft keel down	8.10 m / 26.2 ft
Displacement	353 tons / 778,231 lbs
Max air draft:	75m / 246 ft
Gross Tonnage:	396
Hull speed:	17 knots

CLASSIFICATION

Private Pleasure Yacht

Lloyd’s Register 100A1, SSC, YACHT, MONO, G6,

LMC, UMS-LY3 (MCA)

Yacht Ngoni is built to comply with the Large Commercial Yacht Code (LY3) but operated as a private yacht only



NGONI

SPECIFICATION

HULL PAINT

Alexseal Yacht Coatings ‘Claire de Lune’ & Grey hull paint RAL7035
Jotun black antifouling

CONSTRUCTION

All aluminium hull and deck
5083 H321 for hull and deck plating. “Alustar”
5059 H321 for high loaded areas
internal structure and profiles.”Alustar” 5059 H112 for extrusions.
6 x watertight bulkheads

KEEL

Lifting keel
Hydraulically operated T-style lift keel by Brandjes (2.80 m/ 9.2 ft stroke)
Total keel weight = 93T

MAIN ENGINE

MTU 8V2000M72, 720 kW (966hp) @ 2250 rpm; rating: 1B for (high load factors)
Hours run: 3509 (May21)
Gearbox and propeller - ZF 3310, Hundested VP10 controllable pitch propeller
Propeller diameter 1600 mm with 4 blades
Range at cruising speed 4000 nm @ 12 knots

GENERATORS

2 x Northern Lights M 1064A, 70 Kw each
Hours: 6072 + 6082 (May21)

TANK CAPACITIES

Fuel: 30,307 litres / 8006 USG (7 tanks)
Fresh water: 10,000 litres / 2641 USG
Waste water: 7,000 l / 1849 USG

Fuel system Custom made by Royal Huisman, Facet fuel separator.
Tender fill system Gianneschi tender fuel pump. Flexibimec hose reel

WASTE WATER

Hamann HL Cont PLUS 02 Slim Sewage Treatment plant
Capacity 5200 litres (1373 USG) / day

WATER MAKER

HEM 30/3400 13,000 litre capacity (3434.24 USG) per day

Bilge system Royal Huisman central bilge system. Oily water separator,
RWO Veolia OWS-COM 0.1 m3/hr

THRUSTERS

Bow thruster Hydrosta, 110 kW
Stern thruster Hydrosta, 110 Kw

GROUND TACKLE & WINDLASS

Underwater anchor system on centreline fore & aft of each other
2x hydraulic anchor winches by Steen
178 metres chain per anchor
2x Manson anchors type Pool N = 380 kg (838 lbs)
2x Rondal anchor stoppers



NGONI

SPECIFICATION

STEERING SYSTEM

Manual steering system without power assistance and hydraulic steering system.
Simrad Autopilot system.
Rondal balanced carbon composite spade rudder (6.95m2/ 75ft ²)
Edson Quadrant

INSULATION

Thermal and acoustic insulation in accommodations by means of Melamine foam. Fire protection insulation in galley, engine room and around petrol locker by means of Isover mineral wool. Anti-drumming on ER bulkhead and ventilation, above propeller, outside ER ventilation.

FIRE FIGHTING

Royal Huisman seawater fire-fighting system.
FirePro fire extinguishing system for engine room

HYDRAULIC SYSTEM

Royal Huisman / Parker main hydraulic system

PNEUMATIC SYSTEM

Junair air compressor OF1201. Junair air dryer CRDC54.
Kahlenberg air horn
Bauer Mariner 250-E diving compressor

AIR CONDITIONING

HVAC MAR-IX system with chiller units
307,000 BTU = 90 kW and fancoils, fresh air system

ELECTRICAL

230/400 VAC - 50Hz parallel, 3-phase and single phase electrical system.
Main switchboard with power management & paralleling system.
Emergency power system / 2x set of 2 starting batteries / 1x set of 2 radio batteries.
Shore converter 60 kVA.
Systems supplied by Tijssen Elektro, Alewijnse, Eekels, Valence, Victron.

NAVIGATION EQUIPMENT

B&G H5000
2 x Furuno Radar
Furuno Chart plotters
MaxSea. GPS
Furuno AIS
Sailor Gyro compass
Alpha Minicourse
Navtex weather receiver
Sailor Satcom C
Sailor Echosounder
Furuno FE-800

COMMUNICATION SYSTEMS

VHF transceivers
Sailor 2x SSB transceiver
Sailor 6381
2 x VSAT I Sailor 800



NGONI

SPECIFICATION

ACCOMODATION

Ngoni sleeps 6 guests in 3 staterooms
Owner’s master suite with separate study and gym
1 Double guest cabin and bathroom
1 twin guest cabin and bathroom
Crew 9 berths in 6 cabins (Captain’s cabin, 2 single berth cabins and 3 twin bunk cabins.
All crew cabins have en-suite bathrooms

AUDIO VISUAL EQUIPMENT

Kaleidescape audio and video system
Samsung UHD TVs
Apple RTI room control

ALARM & MONITORING

Royal Huisman Alarm & Monitoring system

GALLEY & LAUNDRY

Appliances from Miele, Foster, Vitrifrigo, Liebherr and Hoshizaki

REFRIGERATION & FREEZERS

Frigonautica custom made cold store.
Cooling system with Foster refrigerator and freezer boxes

FURNISHINGS & INTERIOR

Interior design by Rick Baker Ltd - in 2018 ‘Ngoni’ won “Best Interior” from the International Superyacht Society Awards of Distinction at the Fort Lauderdale Boat Show

Interior Manufactured in-house by Royal Huisman as per the contemporary style of Rick Baker Ltd.

Walls and furniture produced with special finished surfaces, Tabu and Alpi veneers and Wengé door frames, skirting and floors.

Crew styling as per Royal Huisman standard with white HP laminate walls and furniture with oak wood details. Floors in Amtico

UPHOLSTERY

Ceiling panels, sofas, blinds and curtains by Zijlstra.
Furniture and wall panels, headboards and leather work by Cools Upholstery
Deckhouse sofa and loose chairs by Francis Sultana Carpets and M. Ronson Contracts Ltd.
Exterior cushions and mattresses by Telstar Marine

Interior lights Lighting plans and armatures by The Light Corporation
Special finishes by Officina Coppola, Page Lacquer
Hand painted marble shower door by Davique
Custom door handles by J.C. Birtles

INTERIOR CERAMICS & STONE

Basins and bath by Stone Natural Class
Bathroom floors by Stone Natural Class
Galley counters by Stone Natural Class

CRANE & BOARDING LADDER

Deck Crane by Nautical Structures
Royal Huisman hydraulic boarding platform
Side gangway Hydraulically operated [by Cramm]
Cramm Passerelle / bathing platform Hydraulically operated & carbon fibre passerelle with self-levelling steps and platform

DECK HARDWARE

Below deck hardware by Rondal

Custom deck hardware by Harken
Rondal custom flush deck hatches
Royal Huisman custom waste locker.

WINCH PACKAGE

Rondal captive reel winches with electrically-driven variable speed feeders.
Harken drum deck winches

MAST & SPARS

71 metre (233ft) Rondal carbon fibre mast with halyard locks and internal tang system.
24 metre (79ft) Style-to-order performance furling carbon boom by Rondal
Auto detaching and attaching mainsail square top gaff batten
Composite continuous standing rigging by ‘Carbo-link’
Doyle running rigging package

SAILS

North Sails 3Di Mainsail
North Sails 3Di No.2 Jib
North Sails 3Di No3 jib
North Sails Code Zero
North Sails A2 spinnaker
North Sails 3Di Staysail (for removable inner forestay)

Mainsail	853m2 / 9,182ft2
Blade	687 m² / 7,395 ft²
Solent	305 m² / 3,283 ft²
Code	1097 m² / 11,808 ft²
Gennaker	2240 m² / 24,111 ft²
Total up wind	1950 m² / 20,989 ft²
Total down wind	3093 m² / 33,293 ft²

RIG DIMS

I = 66.00 m / 216.5 ft
P = 63.78 m / 209.3 ft
E = 20.30 m / 66.6 ft
J = 19.95 m / 65.5 ft

TENDERS

Williams 565 Tender Diesel Jet tender in recessed bow garage
Crew tender - Bombard commando C3 & 15HP outboard





CARRSWOOD

YACHTS

Telephone: +44 (0) 7476888639 Email: brokerage@carrswoodyachts.com