

# FAR NIENTE



CARRSWOOD  
YACHTS









32.65M / 107' CLASSIC DISPLACEMENT  
MOTOR YACHT', LAUNCHED 2024

BUILT BY SES YACHTS,  
ISTANBUL, TURKEY

DESIGNED BY HOEK DESIGN NAVAL  
ARCHITECTS, NETHERLANDS

Far Niente is a modern superyacht with classic lines,  
sophisticated style, and head-turning allure.

This Dutch-design carries a noteworthy pedigree and will  
appeal to those who appreciate that maritime heritage and the  
modern superyacht lifestyle need not be mutually exclusive.



ELEGANT  
TIMELESS  
SOPHISTICATION

*For doing nothing, or doing it all*













## ABOVE DECK

Launched in 2024, this full-custom motoryacht was built by SES Yachts to RINA Commercial classification and has already proved herself to be a popular charter option, completing her first season in the Mediterranean and more recently undertaking itineraries in Norway.

---

Far Niente's exterior lines were inspired by the North Sea Herring Luggers of the 1900s and she bears the elegant proportions that Hoek Yacht Design is famous for.



## ABOVE DECK

Unlike true classics that struggle for volume, have high noise and vibration levels, and typically come with larger maintenance bills, Far Niente can boast all the latest operational, engineering and navigational systems, as well as stowage space for two 7-metre tenders plus water toys.

---

Exterior spaces include the spacious aft of the bridge deck, where meals can be served al fresco and uninterrupted views to the horizon enjoyed from the steamer chair loungers.



























# INTERIOR

Far Niente's interior design leaves structural beams purposely visible, allowing for head heights of 2.3 metres, and the interior adopts a distinctly contemporary look.

Quarter-sawn grey washed oak has been used for the cabinetry, and light oak floorboards run underfoot. The resultant ambience is one of a calm simplicity, accented by oceanic blues. The main saloon features sofa seating and a dining table for 10. A second upper-deck saloon provides an additional and more intimate lounge space.





















## ACCOMMODATION

This tri-deck motoryacht has accommodation for 10 guests in five cabins. The master suite is located on the main deck, with four guest cabins on the lower deck. Further accommodation is provided for a complement of six crew.





## MASTER SUITE











## GUEST ACCOMMODATION











## GUEST ACCOMMODATION









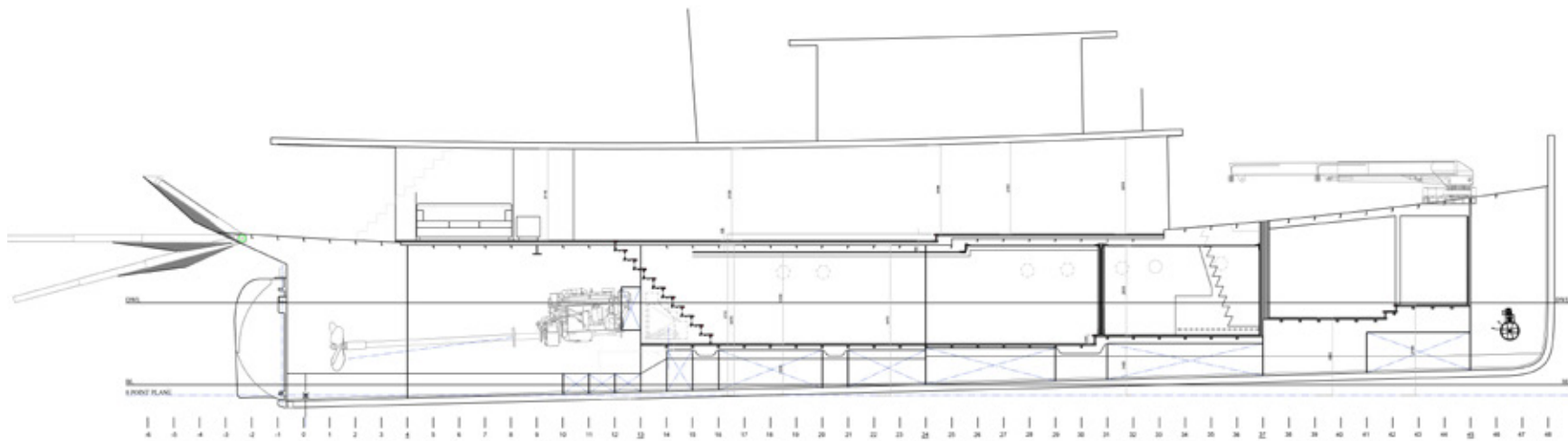
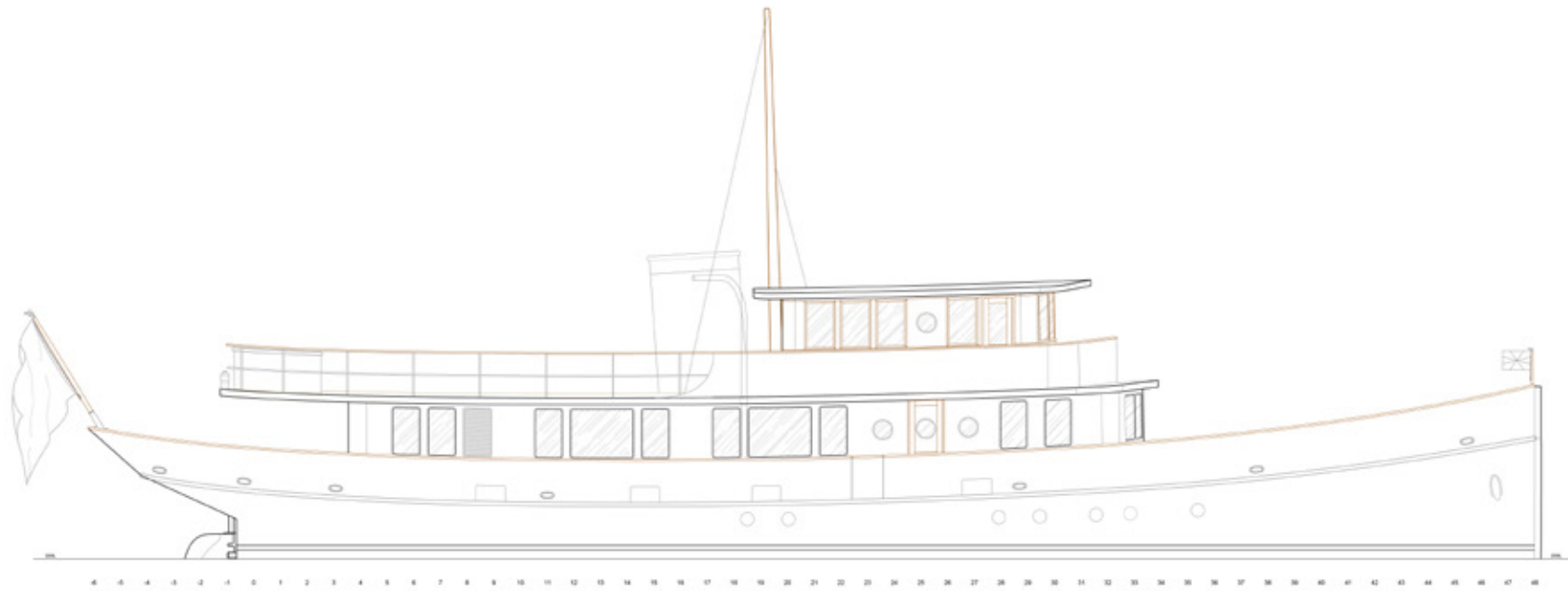






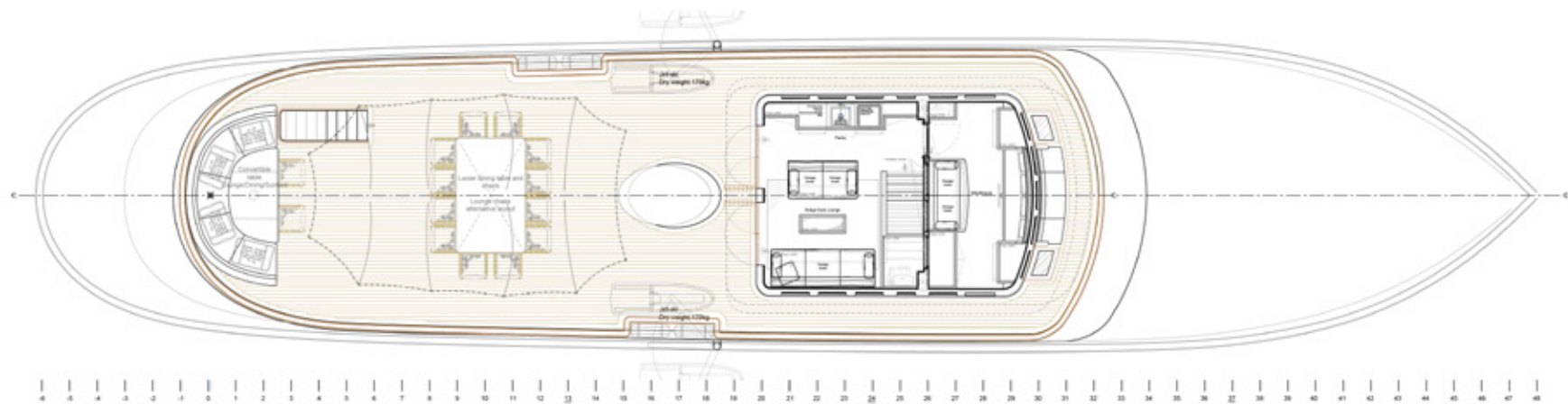
## GENERAL ARRANGEMENT & SPECIFICATION





LAYOUT/GENERAL ARRANGEMENT







**Type:** Classic Displacement Motor Yacht    **Year:** Launched 2024    **Built by:** SES Yachts, Istanbul, Turkey

**Designer:** Hoek Design Naval Architects, Netherlands    **Construction:** Steel hull & cold moulded wood epoxy superstructure

**Flag:** Maltese    **Classification:** Commercially compliant - RINA C+ HULL O MACH Ych short range (60nm)    **Gross Tonnage:** 179

**Sleeps:** 10 guests    **Guest cabins:** 5 (owners cabin & 4 x guest cabins)    **Crew:** 5/6 (3 x crew cabins)

## DIMENSIONS

**LOA:** 32.65m / 107'  
**LWL:** 29m / 95'  
**BEAM:** 6.7m / 21'9"  
**DRAFT:** 2.5m / 8'2"  
**AIR DRAFT:** 6.8m / 22' (without mast)  
**SPEED:** 10 knots @1600 rpm  
**CONSUMPTION:** 60 Litres p/hr (cruising speed inc Generators)  
**PAINT:** Awlcraft 2000 Flag Blue hull & International White deckhouse

## MACHINERY

1 x MAN D2676 LE477 SCR (IMO tier III) 368Kw (500hp) 6 Cylinder Diesel  
 Hours Run 950hrs (July25)  
 Cruising speed = 10 knots @1600 rpm  
 ZF Gearbox with trolling function  
 1 x custom 5 blade fixed pitch propeller (1.4m diameter)  
 Wartsila PSE shaft Stern gland  
 Engine room Lube oil tank & Sludge oil tank with dedicated pump connecting to main engine, gearbox & generators

## TANKAGE

**Water:** 4900 litres (2 x 2450L)  
**Diesel:** 12500 litres total (in 5 x tanks) & 600 litre day tank  
**Black & grey tanks:** 3000 litres  
**Sewage sludge:** 600 litres  
**Oil & sludge tanks:** 300 litres  
**Urea tank:** 600 litres

## ONBOARD ENGINEERING SYSTEMS

Sleipner Sidepower hydraulic Bow & Stern thrusters  
 Sleipner Side Power Vector fin stabilisers – Model VF1950 (stabilisation at rest and underway)  
 2 x Irodmar MSK18 water makers (producing 180L/hr each)  
 1000kg foredeck tender crane  
 Engine room compressed air supply to various quick connections onboard (inc. hatch and door seals and ships raw water seacocks)  
 DATA electro hydraulic steering  
 2 x Danforth stainless steel anchors





2 x 100m anchor chains  
Techma electric toilets throughout  
2 x 100L Gianneschi hot water boilers  
Sewage treatment by Hamman HL-CONT Compact 0125  
Webasto P168Q-S Air Conditioning (4 x 42,000 BTU)  
Webasto interior heating (reverse cycle)  
Fireboy FES engine room fire suppression

#### LAUNDRY

1 x Miele Professional 8kg washing machine  
1 x Miele Professional 8kg dryer

#### GALLEY APPLIANCES

Miele induction hob  
Miele electric oven  
Miele extractor fan  
Miele microwave

#### REFRIGERATION

Gaggenau Vario 400 fridge  
Gaggenau Vario 400 freezer  
Miele freezer  
Smeg blast chiller

#### OTHER REFRIGERATION

Saloon 130L drinks fridge  
Saloon ice maker  
Saloon wine chiller (42 bottles)  
Bridge deck 130L drinks fridge  
Sky lounge ice maker

#### NAVIGATION EQUIPMENT

2 x Furuno 19" TZT19F MFD touchscreen Glass MFD's (radar, charts etc)  
2 x Furuno F1-70 115mm displays (speed, log, depth & data)  
Furuno BBDS-1 sounder & Airmar transducers  
Furuno PG-700 Fluxgate compass  
Furuno 330B GPS antenna  
Furuno 711C Autopilot  
Furuno DRS4DL 4kW 19 Inch Radar Radome  
Furuno NX700B Navtex with digital display  
Furuno FA-70 AIS receiver & transceiver  
Furuno FM-8900s GMDSS  
Furuno FM-4800 DSC VHF, GPS, AIS with NMEA2000 & loud hailer  
Furuno SCX-20 satellite Quad compass  
Airmar 120X weather station  
Cassens & Plath magnetic compass  
Rudder angle display  
Bridge to Engine room intercom  
4 x CCTV cameras  
Starlink High Speed Internet Receiver

## BATTERIES

Service - 1248ah @24v  
 Main engine - 225ah @24v  
 Generators - 2 x 135ah @24v  
 Emergency batteries - 675ah @24v  
 GMDSS batteries - 225ah @ 24v

## CHARGERS

Service - 2 x Victron Skylla TG 24v/100a  
 Main engine & generators - 3 x Victron IP22 24v/16a  
 Emergency batteries - Victron Skylla TG 24v/50a  
 GMDSS charger - 24v/30a

## INVERTER

Victron Quattro 5kva

## SHORE POWER

Marpower SPC-II Hybrid shore power converter - 400v 3ph 50Hz

## GENERATORS

2 x 35kw Kohler generators (Hours run 1,500 July25)

## TENDERS & TOYS

4.5m Zodiac RIB with 50hp Yamaha outboard  
 Waterskis  
 Yachtbeach 6m Inflatable pool

## CHASE BOAT

(available by separate negotiation)  
 Novamarine Black Shiver 100EFB  
 Twin Volvo D4 320hp Diesel inboards  
 Model year 2023







**CARRSWOOD**

---

**YACHTS**

Telephone: +44 (0) 7476888639    Email: [brokerage@carrswoodyachts.com](mailto:brokerage@carrswoodyachts.com)